

Sotaro Yamamoto
portfolio

Atelier Sotaro Yamamoto

2-13-13, Higashimotomachi,
Kokubunji-shi, Tokyo,
185-0022, Japan

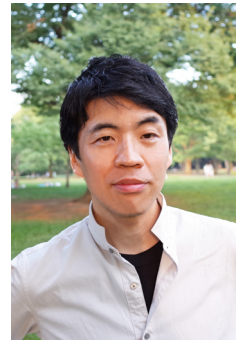
tel / fax +81-(0)42-325-4721

e-mail sotaro@atyam.net

website <http://atyam.net>

Sotaro Yamamoto
Atelier Sotaro Yamamoto

HP: <http://atyam.net>



Education

- 1989 Waseda University, Tokyo, Japan
- 1989-91 Waseda University, Graduate Course of Architecture and Civil Engineering
Master of Engineering in Architecture

Qualifications

- 1992- First Class Architect (Japan)

Major Architectural Projects

- 2004 Kokubunji Y-House, Tokyo, Japan
- 2005 Renovation in Itabashi, Tokyo, Japan
Shiodome Plaza Building, Tokyo, Japan
- 2006 "Round on the Roof" Exhibition, Tokyo, Japan
Nanyodo Roof Lounge, Tokyo, Japan
Unoccupied House Projects, Niigata, Japan(Echigo-Tsumari Art Triennial)
Footbath Project, Niigata, Japan(Echigo-Tsumari Art Triennial)
- 2007 Restaurant "Maison de Cerisier", Tokyo, Japan
Fumio Tanaka Library Tsumari, Niigata, Japan
"Calculation -Prospector's Works" Exhibition, Tokyo, Japan
- 2008 "Lighting Book, Airan Kang" Exhibiton, "One Life, Some Books, Airan Kang" Exhibiton, Tokyo, Japan
Chikumashobo Exhibition Booth for Tokyo International Book Fair
- 2009 Nihonbashi-Odenmacho Plaza Building, Tokyo, Japan
Flag House, Tokyo, Japan
Yard of Doors, Niigata, Japan(Echigo-Tsumari Art Triennial), Niigata, Japan
- 2010 "Airan Kang the bookshelf enlightened" Exhibiton, Shizuoka, Japan
Toei Digital Center, Tokyo, Japan
- 2012 Australia House, Niigata, Japan
Forest of Doors, Niigata, Japan
- 2013 Amulet Shop, Tokyo, Japan
Raikouji Temple, Chiba, Japan
- 2014 Head Bestselection Award Exhibition Booth, Tokyo, Japan
- 2015 Kiyotsu Warehouse Museum, Niigata, Japan
- 2016 Space of Materials + HEAD Best Selection Award 2016 Exhibition Booth, Tokyo, Japan
- 2017 Rhino Library, Yamanashi, Japan
M.M.C studio, Tokyo, Japan
Yukihisa Isobe Memorial Echigo-Tsumari Kiyotsu Soko Museum of Art(Echigo-Tsumari Art Triennial), Niigata, Japan
- 2019 Japanese Paper House, Tokyo, Japan
- 2020 "Noriyuki Haraguchi wall to wall" Exhibition, Tokyo, Japan

Major Academic Experience

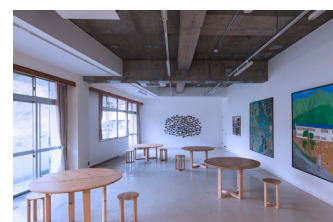
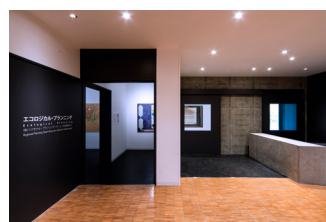
- 2006- Toyo University
- 2008-17 Meiji University
- 2011- Kogakuin University
- 2015- Shibaura Institute of Technology

Major Publications and Writings

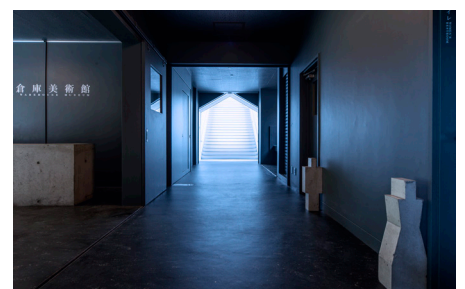
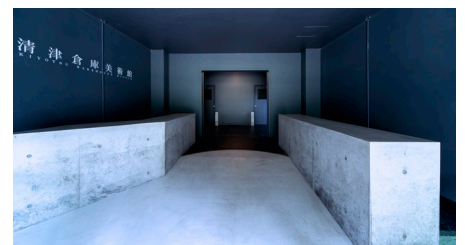
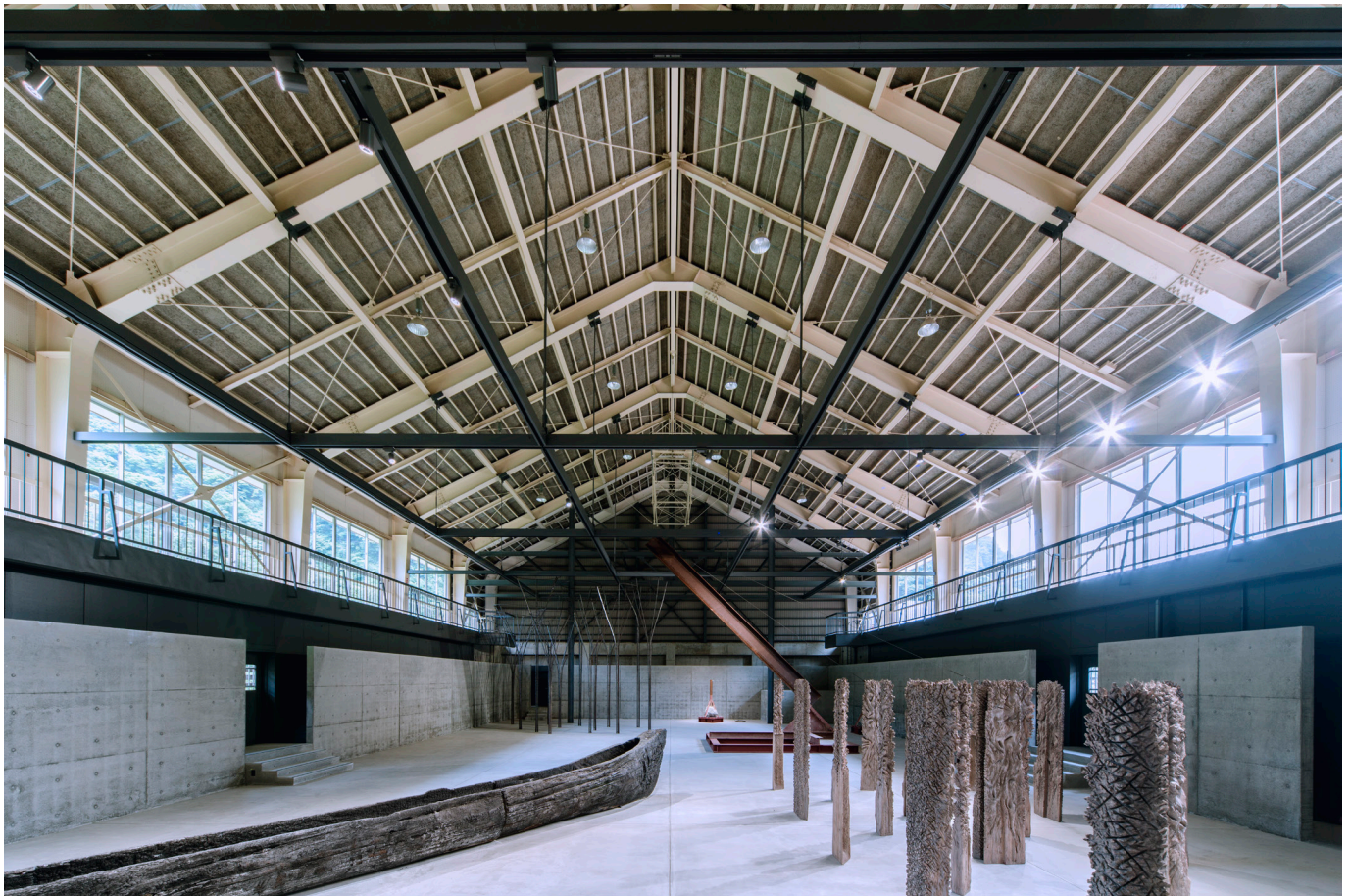
- 1995-96 serial writings for 'Eminent Works Abroad' (Space Design)
(Collaboration with Nobuo Iwashita, Kotaro Imai, Atelier Bow-wow, Masashi Sogabe)
- 2002 translation of 'Studies in Tectonic Culture' by Kenneth Frampton (Collaboration with Tsuyoshi Matsuhata, TOTO Shuppan)
- 2007 'DETAIL JAPAN TALK' (Reed Business Information)
- 2010 'Knowing Architects / Becoming Architects' (Oukokusha)
- 2018 taraslation of 'ARCHITECTURE INSIDE+OUT' by John Zukowsky (Tokyo Shoseki)
- 2020 'Architectural Competition for the People' (Collaboration with Shunsuke Kurakata, NTT Shuppan)

Major Prizes

- 1989 awarded 1st place in the Central Glass International Architectural Design Competition
- 1990 awarded 1st place in The Mainichi Residential Design Award
- 1997 awarded second place in The Shinkenchiku Residential Design Competition (judge: Jacques Herzog)
- 2013 The Jorn Utzon Award for International Architecture (Australian Institute of Architects)
- 2015 Illumination Awards (The Illuminating Engineering Society of North America)
AACA Award (Japan Association of Artists Craftsmen and Architects)
- 2019 Tokyo Kenchiku Award (Tokyo Association of Architectural Firms)
- 2020 Good Design Award (Japan Institute of Design Promotion)



Yukihiisa Isobe Memorial Echigo-Tsumari Kiyotsu Soko Museum of Art
Continuing from the 2015 renovation of the Kiyotsu Warehouse Museum in the gymnasium of an abandoned elementary school, the main school building was also renovated into an art museum. Visitors experience a space that descends from the white-finished "sky" exhibition space on the upper level to the "earth" exhibition space that merges with the gymnasium on the lower level. It makes visitors feel the contrast and fusion of the museum and the elementary school, the extraordinary and the ordinary, and the art and the local environment.



Kiyotsu Warehouse Museum

An gymnasium of abolished elementary schoolis changed into large exhibition room. We removed existing floor of gymnasium and made concrete surrounding wall for the museum. On the other hand, in the upper area of the room, we remained existing elements such as structural beams and windows as to impress memories of this building.

This building was awarded AACA Award (Japan Association of Artists Craftsmen and Architects).



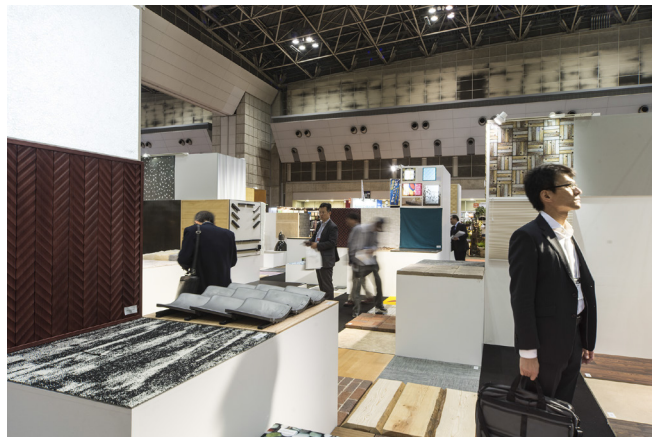
“Noriyuki Haraguchi wall to wall” Exhibition

This exhibition was the opening exhibition of a contemporary art gallery named “√k Contemporary”. Approximately 30 works by Mr. Noriyuki Haraguchi, one of Japan's leading artists, including his representative work "Oil Pool," were displayed on a large scale from three floors to the rooftop. Atelier Sotaro Yamamoto was in charge of the venue design and the detailed design of the three-dimensional works.



M.M.C studio

Interior and exterior renovation of a practice studio owned by a theater company. While preserving the architectural atmosphere of a former factory, square studs were used to construct a studio space in the form of a stage and audience seating. Square studs, which are usually used as a structural base material for drywall, have excellent strength and durability, and can be used as very inexpensive and sharp finishing materials by carefully finishing the details.



Space of Materials + HEAD Best Selection Award 2016 Exhibition Booth

A special booth at the "Architectural Interior Week, Japan Home Show 2016", a large-scale exhibition of building materials held at the Tokyo International Exhibition Center. The concept booth "Material Space" planned by the organizer and the exhibition of "HEAD Best Selection Award 2016", an award for building materials, are integrated. We produced and designed a space that visitors can experience by seeing and touching more than 200 types of building materials from various angles.



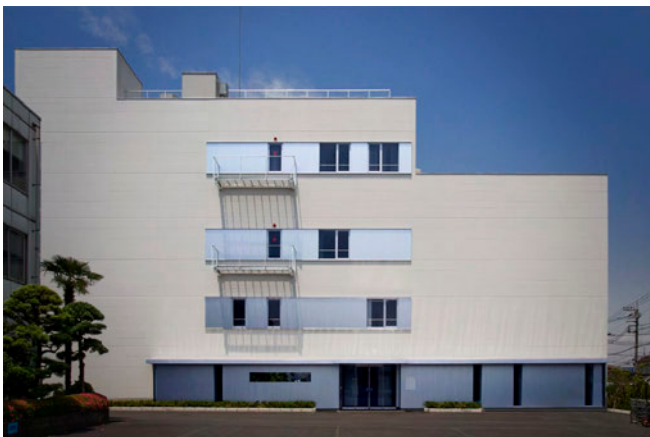
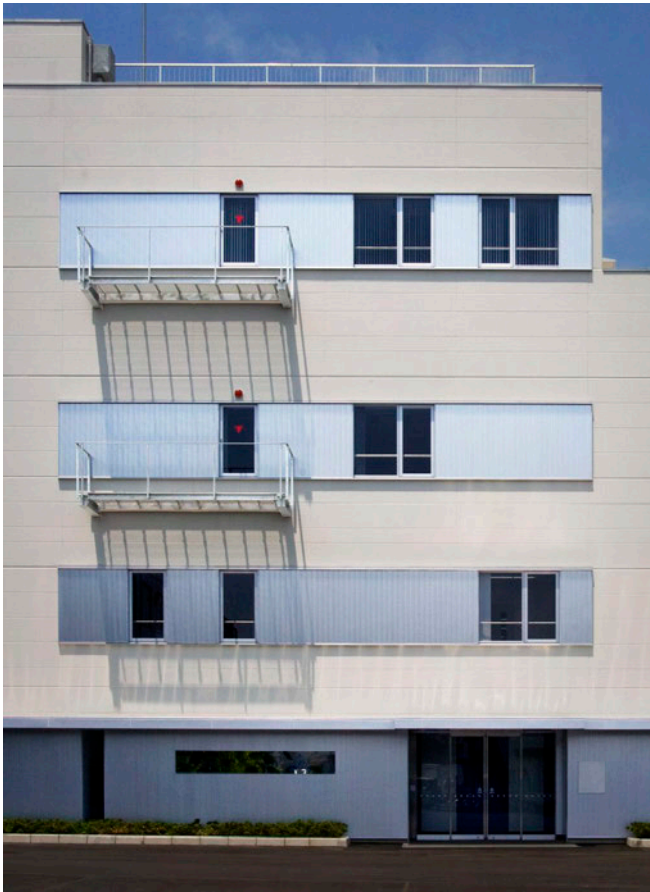
Raikouji Temple

A Buddhist Temple, made by Japanese traditional wooden construction method. Using the traditional carpentry, we designed this temple following the contemporary aesthetic consciousness and technologies. All lightings (LED) combined with the main structural elements shows a new temple style in comparison with the traditional style made in the era without electrical lightings. This building was awarded Illumination Awards (The Illuminating Engineering Society of North America).



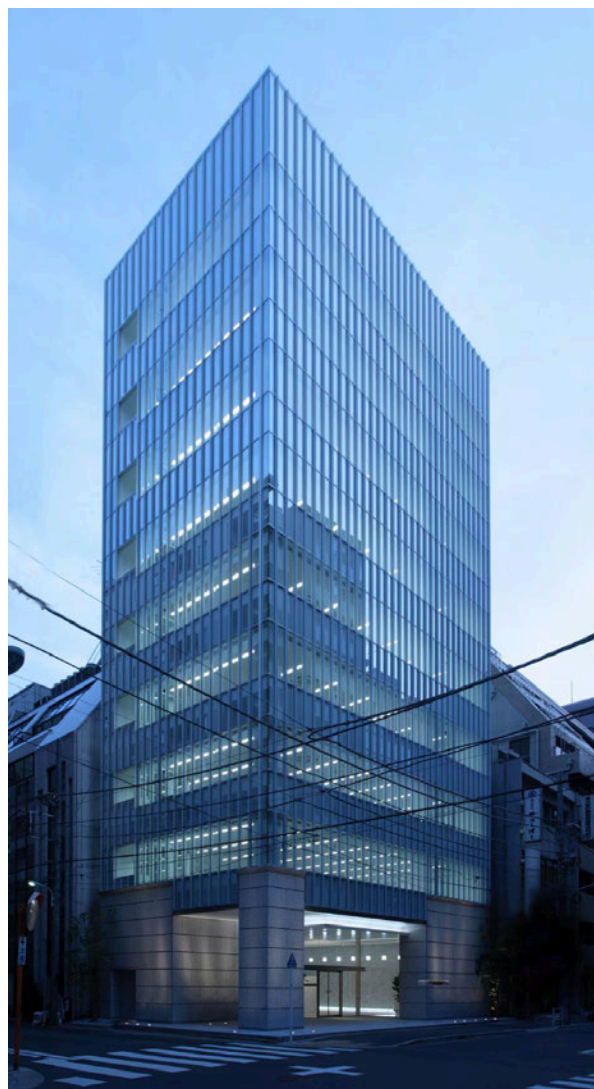
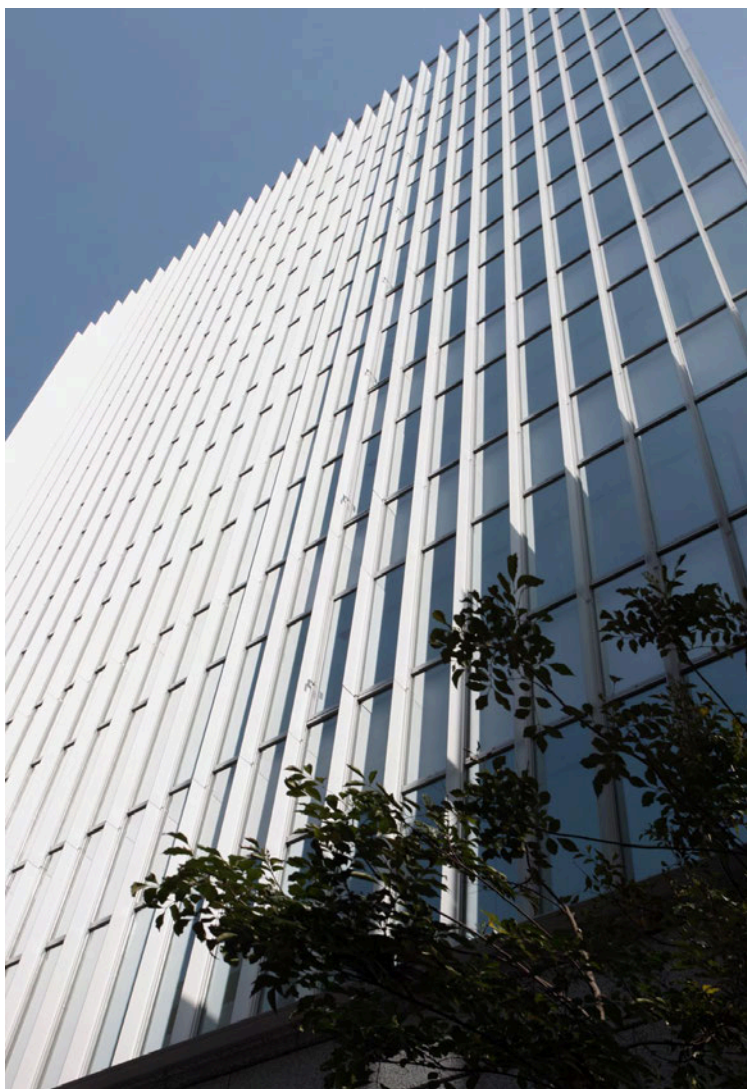
Amulet shop

A shop of a company that sells PC systems and peripheral devices in Akihabara. It is also a showroom that symbolizes the corporate image. A large exhibition table made of fine OSB board has a shape with a motif of a spacer used for packaging electrical equipment, reflecting the concept of "opening a box and going inside". The space made of wooden materials gives off a strong personality in the electronic parts town.



TOEI Digital Center

Located in the site of the largest movie studio in Tokyo, TDC is the cutting-edge facility for the digital video editing works. It contains sound studio, color-collecting studio, video editing rooms and high-functional preview hall. We are committed to make total image of the building, including the design of the facade, halls and the other prime rooms.
<2010. Tokyo, Japan. Type: Digital Center. Execution Design: Daiwa Odakyu Construction>



Nihonbashi Odenmacho Plaza Building

Designing the new office building at the old business district, we mainly intended to make a new environment of the urban block. While the office rooms on the upper floors are separated by the high-level security system, the entry hall on the ground floor is intended as a public space. The programmed lighting for the entry hall changes dramatically over time and effects to change the total atmosphere of the surrounding streets.

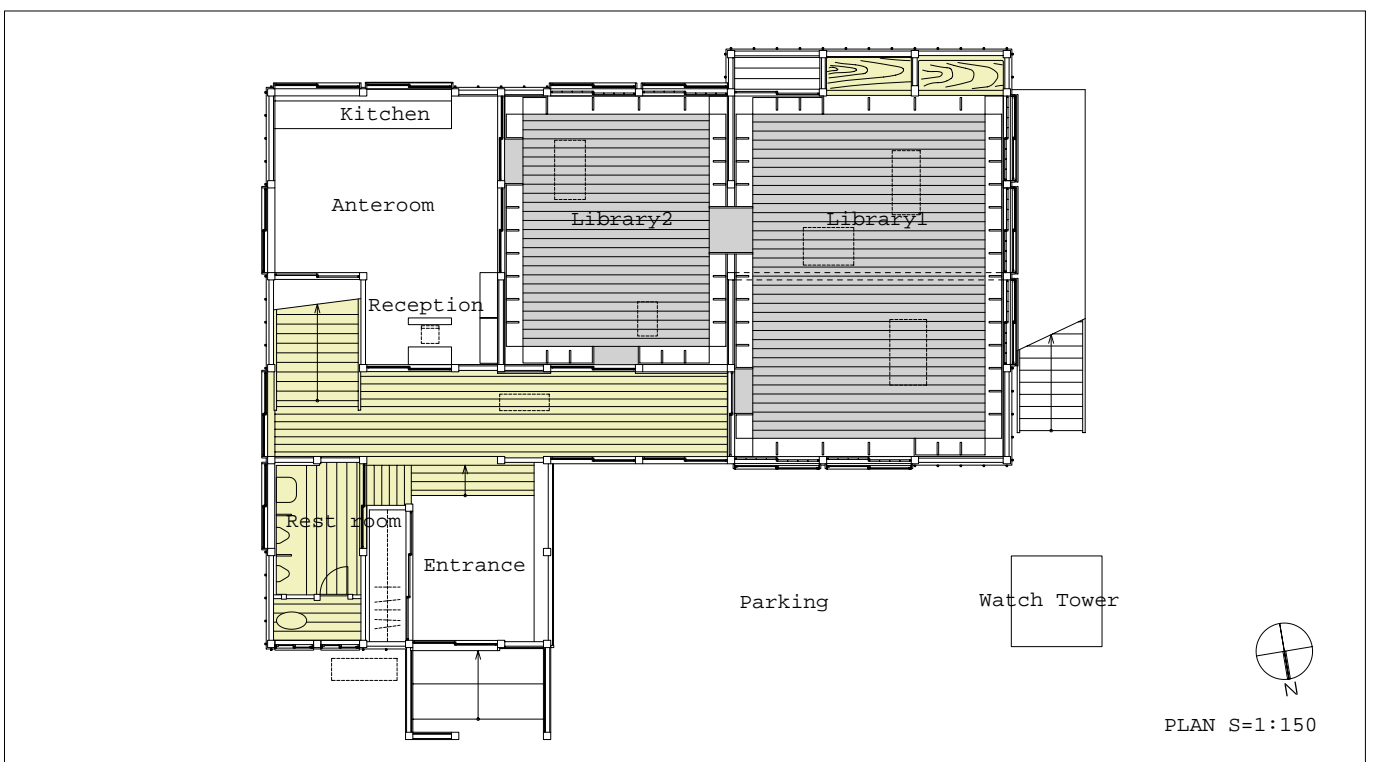
<2009. Tokyo, Japan. Type: Office Building. Lighting Design: SLDA>

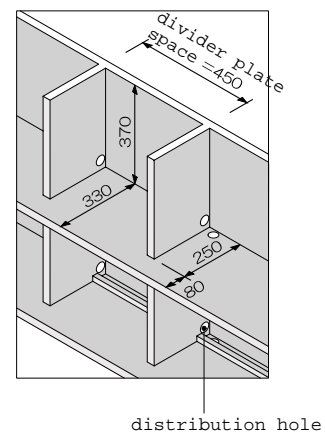
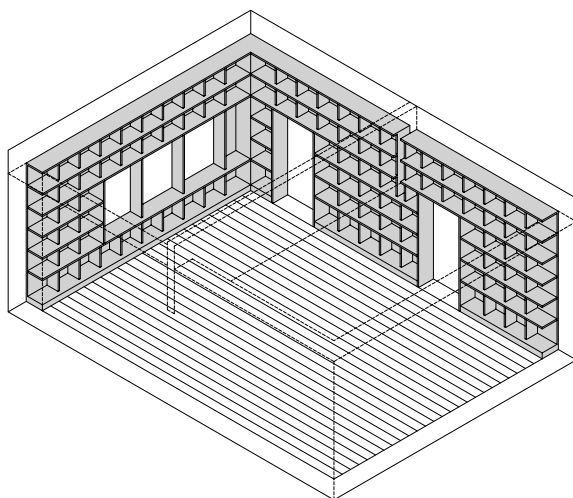


Chikuma-shobo Booth in Tokyo International Book Fair

The exhibition booth for Chikuma-shobo, a major publishing company in Japan. Collaborating with artist, we overlaid the transparent bookshelves with lighting books in front of the bookshelves with real books. The visitors between these bookshelves were incorporated in this scenery as one of the layers. We intended to make this not as a showcase to be seen but as a stage to be participated.

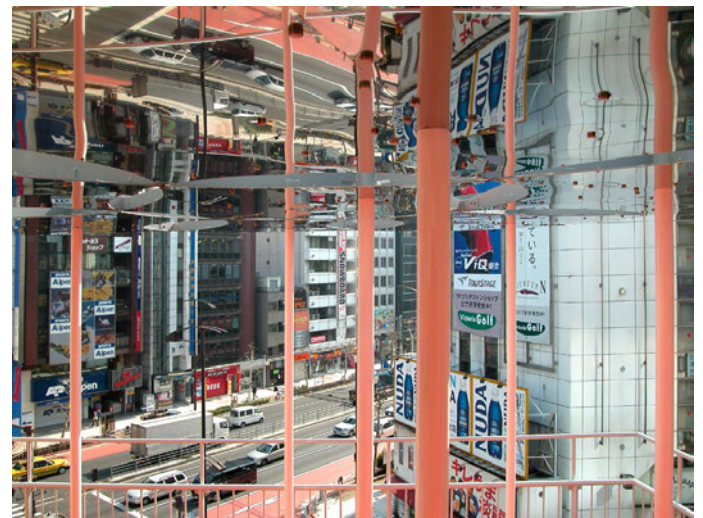
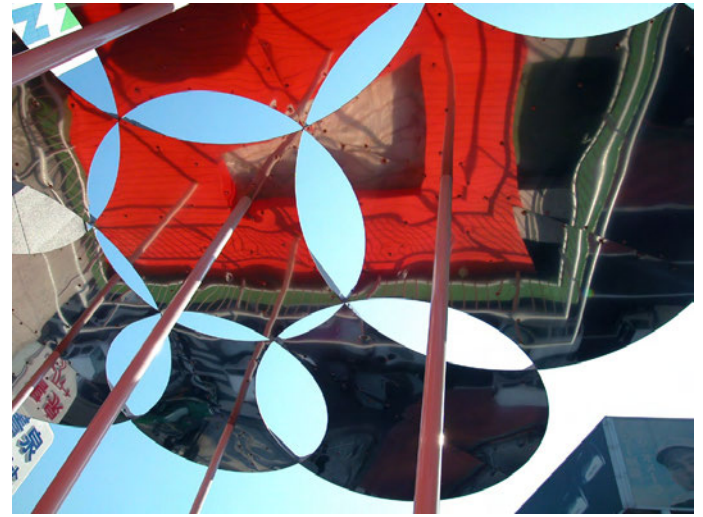
<2008. Tokyo, Japan. Type: Exhibition Booth. Artist: Airan Kang. Green coordinator: Keiko Arima>





Fumio Tanaka Library Tsumari

An old wooden private house-like community center was converted into a library holding the collection endowed from Mr. Fumio Tanaka, a renowned master carpenter. All elements in this space, such as new bookshelves, new tables with chairs, old plaster walls, old openwork upper screen, and art pieces of Ms. Airan Kang are overlaid leaving some part of other presences. As a result, the experiences in this library provide obscure feelings between usual lives and unusual experiences to the visitors. <2007. Niigata, Japan. Type:Library. Artwork:Airan Kang>



Nanyodo Roof Lounge <Prospector's work>

This small outdoor lounge is situated on the roof of the bookshop in Tokyo. Circular roof palates have functions not only as a sun-shading but as a billboard against the street. The floor and wall around the space are painted red and people on the street see this object reflecting this color as red. Once going up to the lounge, people see inverted view of the city in the roof.

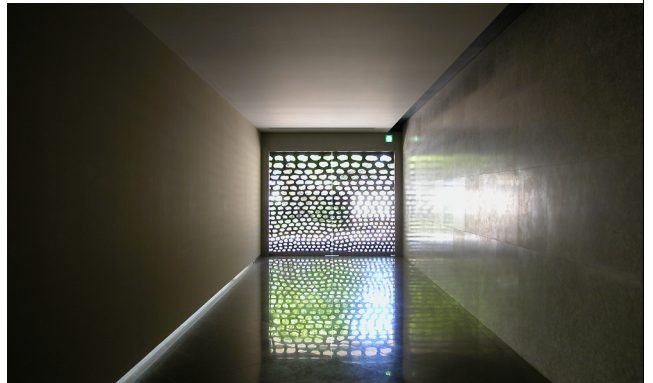
<2006. Tokyo, Japan.>



Shiodome Plaza Building

To contribute to the cityscape and make fine pedestrian space, we set the facades back from the street. At the same time, we lined the facade posts at unusually narrow intervals. As a result, vertically long proportion of the building was visually enhanced. The roof terrace like a deck of a ship would give one a pleasure of urban life.

<2005. Tokyo, Japan. Type: Office Building>



Kanjitsu Kikuchi Memorial Tomo Museum of Art

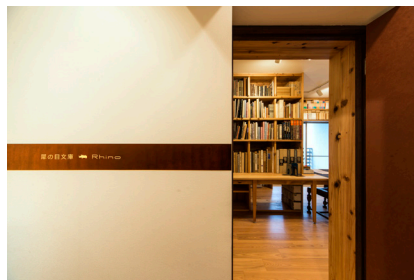
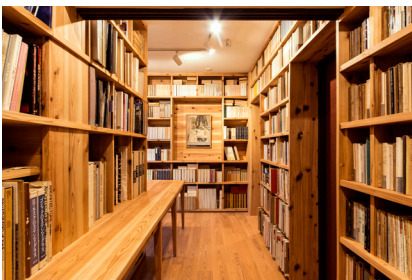
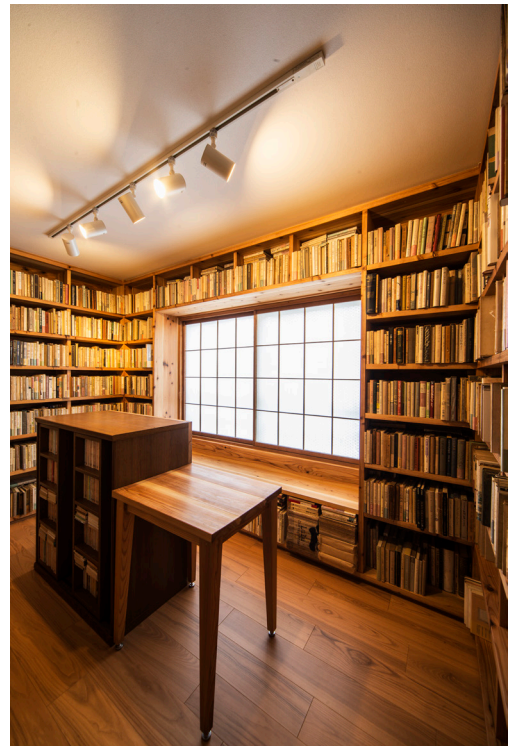
A museum that specializes in displaying contemporary ceramic art. The outer wall is covered with Israeli limestone, and the interior is finished with emphasis on the texture of materials such as stone, Japanese paper, and glass. There is also a Buddhist temple in the Japanese-style garden. The restaurant facing the garden has special lighting that looks like a starry sky. It also has a high degree of safety against earthquakes with seismic isolation devices.



Japanese Paper House

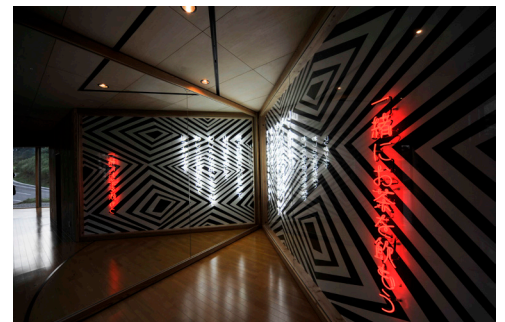
Renovation of a wooden house. The south area of the house was reduced, the garden was expanded, and the outside light was taken in. The space was integrated to softly spread the light throughout the house, and the entire space was covered with "Japanese paper paint."

The ceiling is lined with art lighting created especially for this space. By moving the arm, the light distribution changes from normal lighting to indirect lighting.



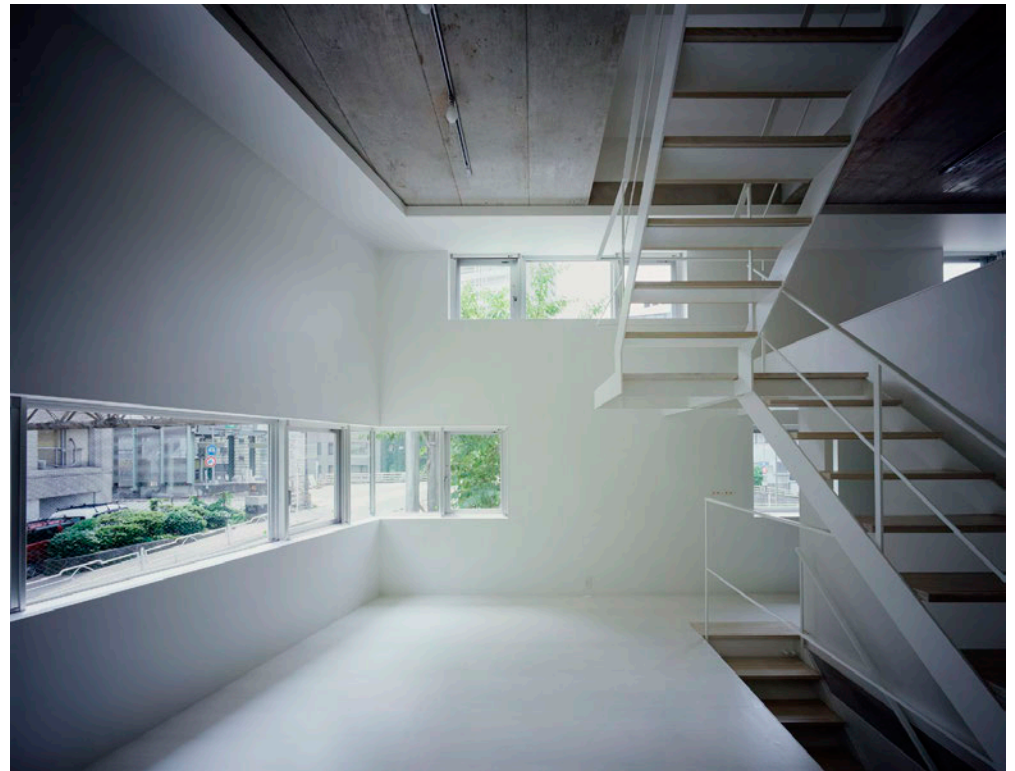
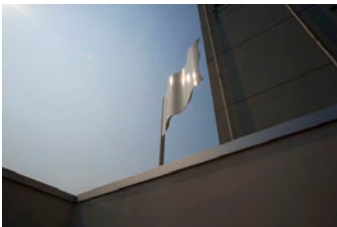
Rhino Library

Renovation of a residential unit of a resort condominium designed by A. Raymond (1974) into a private library that stores and displays books related to art and literature. A lifestyle attempt to use a resort condominium with many vacant rooms as an archiver to preserve the fragments of the culture of an era in the hands of individuals. The insulation performance and moisture absorption and desorption performance of solid wood boards keep the environment in the room in good condition.



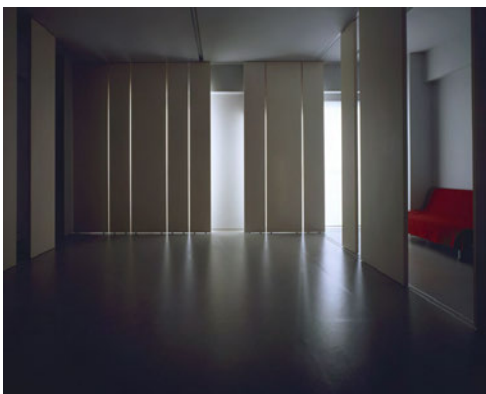
Australia House

A residential workshop for Australian artists and gallery in Niigata, Japan. The basic designer, Andrew Burns Architect was selected by the international design competition. Receiving the awarded design, the practical design was made by Japanese architects' team of Atelier Imamu and Atelier Sotaro Yamamoto. This building was awarded The Jørn Utzon Award for International Architecture (Australian Institute of Architects)



Flag House

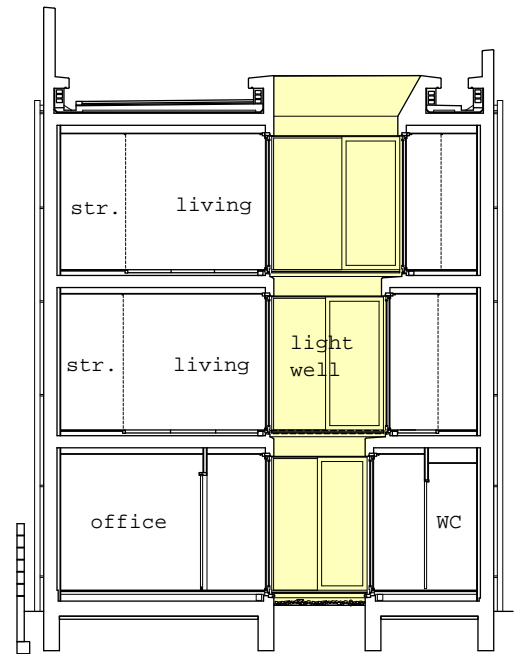
Near the center of Tokyo, this site is highly surrounded by the urban factors such as a major street, an entry gate for the expressway and buildings as offices, shops and condominiums. We thought that to make private house here means to make minimum but high-level privacy, security and quietness. So we designed it as a small fortress with flags. The intermissive location of the windows works to make the good view from the inside without disturbing secure appearance from the outside. <2009. Tokyo, Japan. Type: Private House. Flag art: Jun Honma>



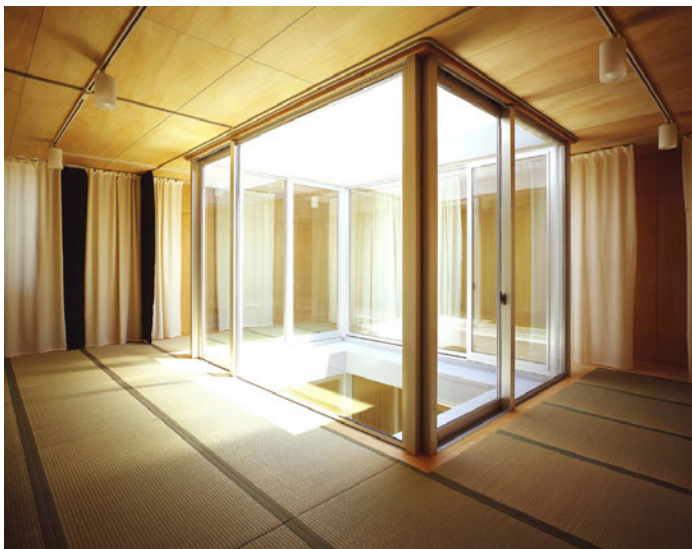
Renovation in Itabashi

This renovation work for a room in the housing complex consists of 30 sliding doors. They could act as separating walls to make two rooms, or only to form interior facades. These locations and functions are directed spontaneously by the daily behavior of the resident.

<2005. Tokyo, Japan. Type:Residence>



Section



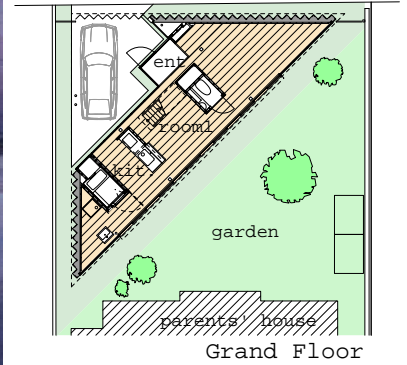
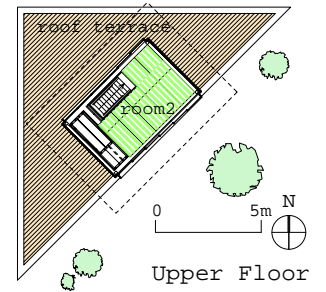
Kokubunji Y-House

The site of this house is facing a heavily-trafficked street. So we made no windows on the perimeter walls and succeeded to make very quiet interior space. To gain adequate sunlight, there is a light well in the center of the building. This light well is also generating the visual connection between the floors. The floor of the living area is mostly finished by traditional 'tatami'.

<2004. Tokyo, Japan. Type: House for two generations>

Sotaro Yamamoto

Works: Architecture



Mito N-House

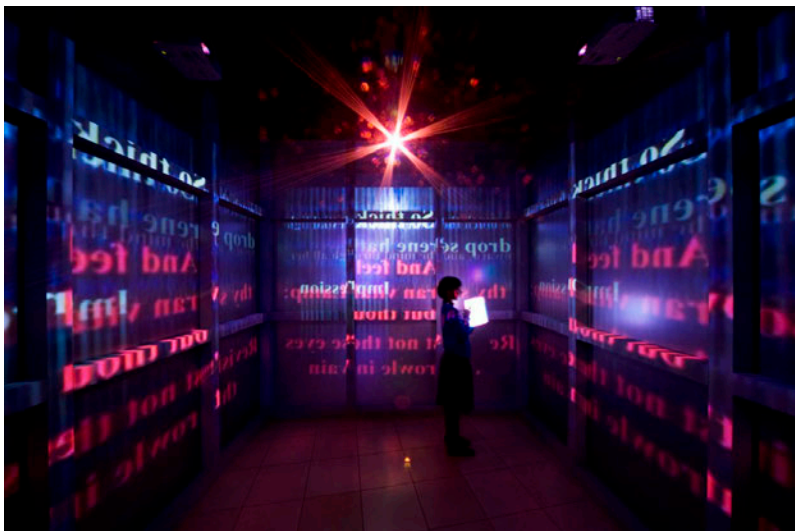
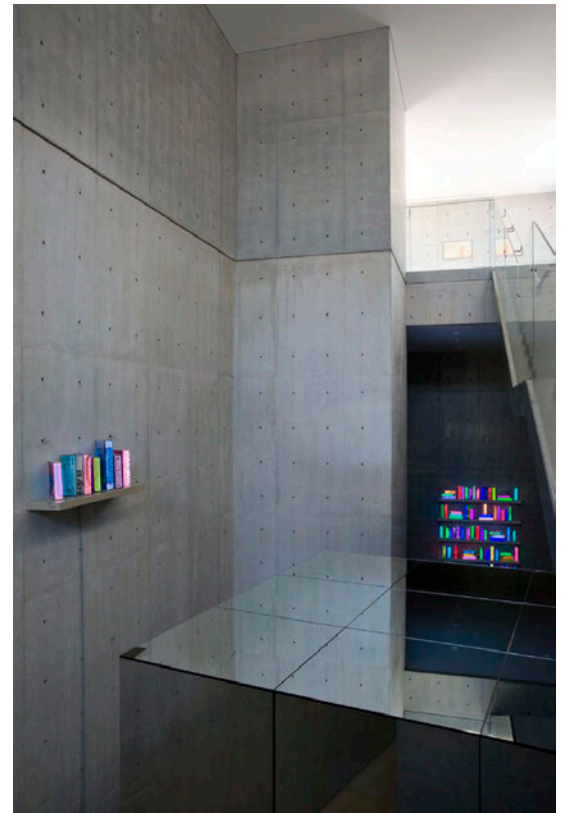
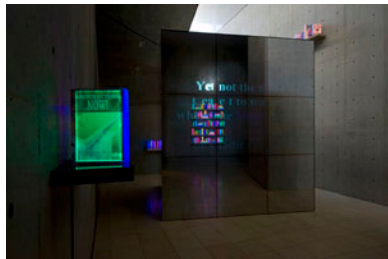
This house has two different spaces. The room on the grand floor is protected from the street by the wall of reinforced concrete. The room on the upper floor could fully be opened to the outside as a summer house. Triangular form of the footprint was planned to make semi-separated distance from the abutting house of resident's parents. The form shows the relationship with surrounding contexts.

<2002. Ibaragi, Japan. Type:Private House>



Forest of Doors (Echigo-Tsumari Art Triennial 2012)

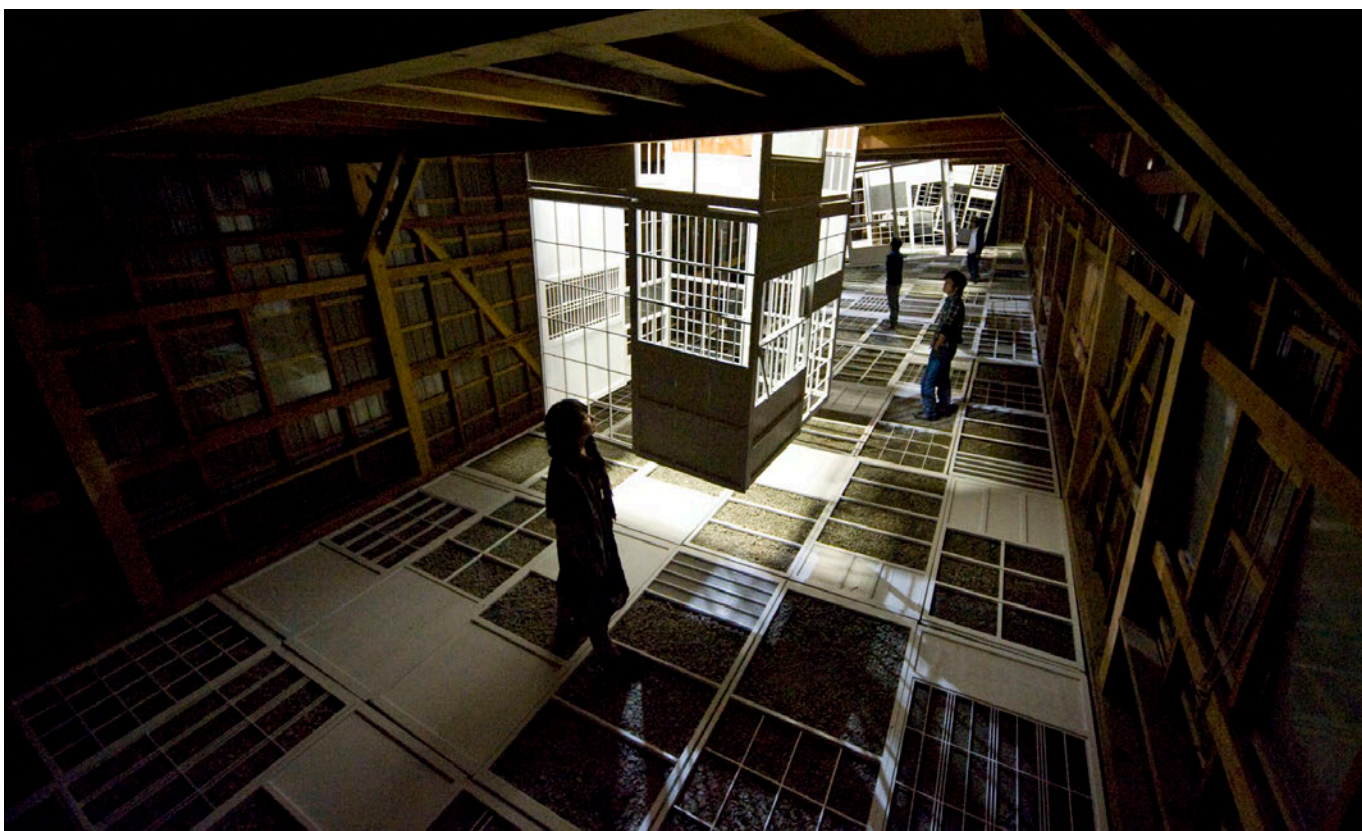
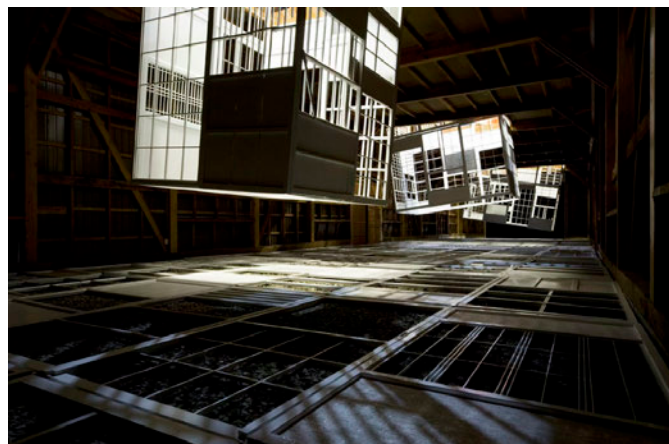
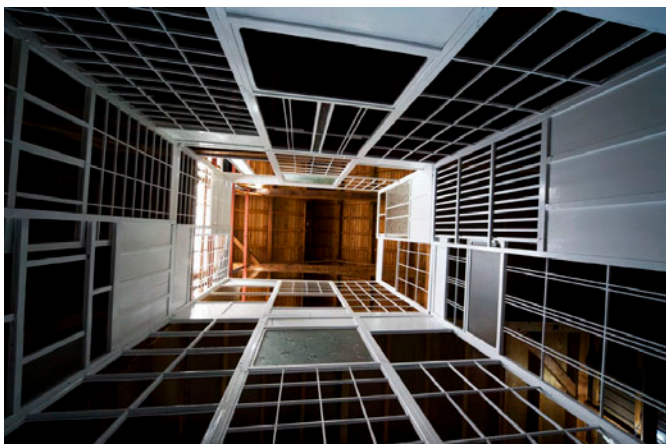
An exhibit for Echigo-Tsumari Art Triennial 2012 in Niigata. This large installation is also used as temporary outdoor market during the triennial. White-coated old wooden doors are weaved according to the geometric rules. There are 12 small shop chambers in total in triangular structure.



"Airan Kang -the bookshelf enlightened" Exhibition

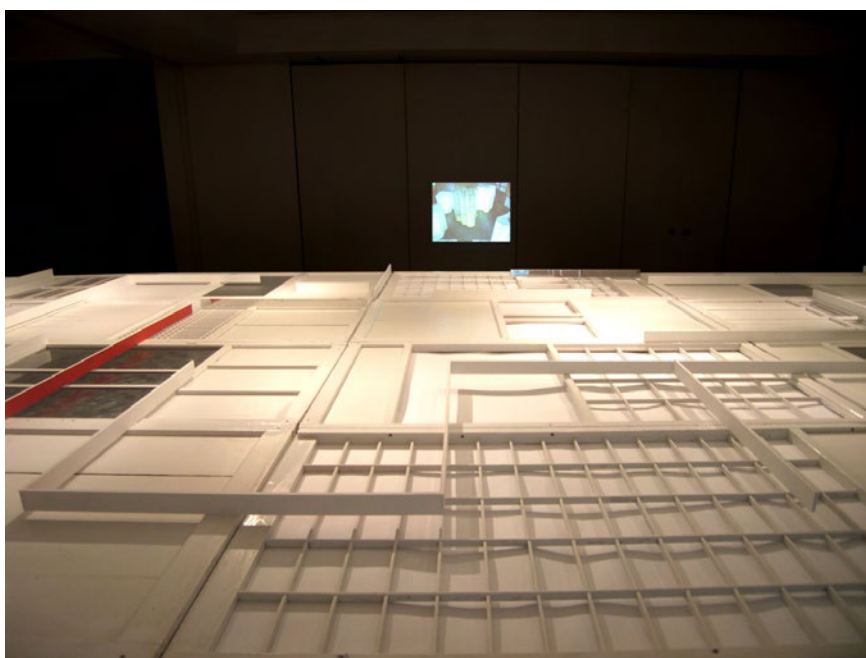
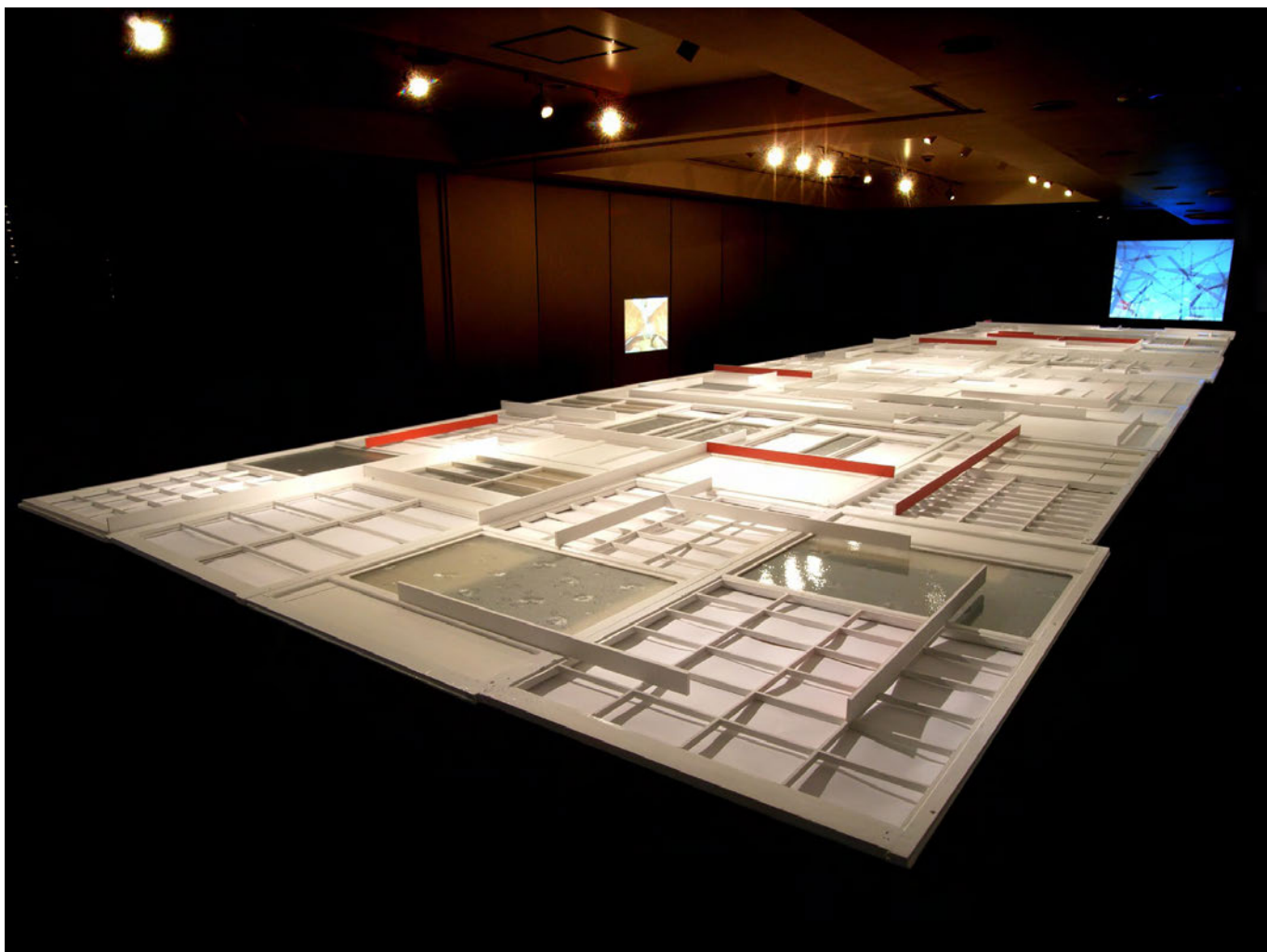
For the exhibition of Airan Kang, a famous Korean artist of media art, we designed entire gallery rooms in the museum. For the center of the exhibition, the artist had the idea to make a booth to project an interactive video art inside. Answering it, we made the translucent booth by developing special glass which had the feature of half-mirror on outer surface and projection screen on inner surface.

<2010. Shizuoka, Japan>



Yard of Doors (Echigo-Tsumari Art Triennial 2009)

An exhibit for Echigo-Tsumari Art Triennial 2009 in Niigata. In this heavy snowfall area, inner yard space in the house has been very important working space in winter. We used old wooden doors as icons of such traditional houses and lives. As whole floor area was filled with doors, all visitors had to walk carefully by finding the stepping-point where the glass or papers of doors are lost. Through three floating objects, outer light was coming to the space. <2009, Niigata, Japan>



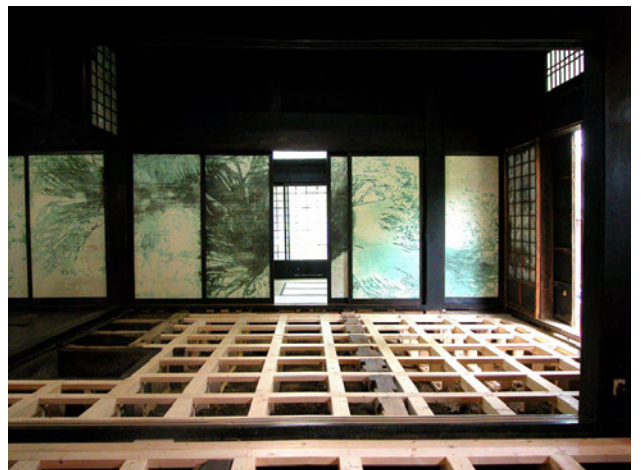
"Calculation -Prospector's Works" Exhibition <Prospector's work>

At the center of the site of the exhibition named 'Calculation', a large table-like object made of Japanese traditional doors designed by architects group, Prospector (Sotaro Yamamoto, Souhei Imamura, Yasuhiro Minami) was placed. In addition, video movies showing Prospector's architectural works was projected around the object.
<2007. INAX GINZA, Tokyo, Japan.>



Myokayama Photo Studio
art:Hironao Kuratani

House in Koide
art:Sotaro Ide + Toshiya Takahama



Unoccupied House Projects

There are many unoccupied houses in the area of Echigo-Tsumari Art Triennial. General producer of the triennial so planned to renovate many houses by the collaboration of artists and architects. Atelier Sotaro Yamamoto was offered a commission to work for about a half of all, 30 houses. We discussed many times with artists to make the idea of the art and technically supported all phases of realization.

<2006. Niigata, Japan. Collaboration with artists>



Restructure
art:Harumi Yukitake

Community House in Ashitaki
art:Mitsuhiro Ikeda



Sotaro Yamamoto

Works: Architecture with Art



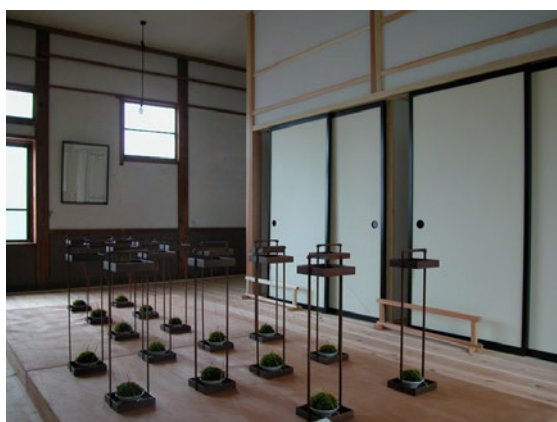
House in Futako
art: Yuki nori Yamada



Noukanki
art: Ikuko Kimura



Anburi Yubun Kinenkan
art: Yoshikuni Kimura



Mitsuyama Elementary School
art: Keisuke Yamaguchi, Jun Honma





Footbath Project (Echigo-Tsumari Art Triennial 2006) <Prospector's work>

This footbath was made as an exhibit for the Echigo-Tsumari Art Triennial 2006 in Niigata. Surrounding screen walls consisted of Japanese traditional doors, painted white. We made it along the concept of making a device to activate aesthesis for viewing many other arts.

<2006. Niigata, Japan.>



Urban Scene

A proposal for the cityscape of Tokyo, made for the exhibition of landscape. As a result of the comparison study of Akihabara and Shinjuku, we proposed to give chances of self-presentation to the skyscrapers in Shinjuku.

<2003, Tokyo, Japan. Type:Proposal>